



DESKTOP
INKJET
INK



传美讯电子科技（珠海）有限公司
TrendVision Technology(Zhuhai)Co.,Ltd

地址:广东省珠海市金湾区三灶镇定湾七路3号
Add :No. 3, Ding Wan 7 Road Ding Jia Wan Industrial Park,
Sanzao District Zhuhai, Guangdong, China.519040
Fax: 0086-756-3363600 Tel: 0086-756-3363651

<http://www.tvtgroup.net>



DESKTOP
INKJET
INK

www.tvtgroup.net

传美讯/TRENDVISION 公司简介/INTRODUCTION



传美讯电子科技(珠海)有限公司2004年成立于中国珠海，专业生产喷墨墨水制造企业。多年来以不断创新技术、高效生产、严谨管理流程、优质的服务，为客户提供了完美的喷墨墨水产品及一系列的解决方案。

传美讯产品领域囊括喷墨打印机、大幅面写真机、数码印花机的专用兼容墨水。为了实现对顾客高品质的服务，公司设立四大营运中心-研发、厂务、销售、行政。四大中心彼此相互沟通、决策，协同全面优化运作流程，使顾客感受到传美讯团队贴心的服务，为顾客创造更高的商业价值。

我们始终保持着前瞻领先的视野，未来的传美讯，仍将不断的精益求精，以“务实、创新、精细、强久”的企业理念，倾听顾客的需求，满足顾客的需求。欢迎您成为我们双赢的伙伴。

喷墨技术，行业领跑！

TrendVision Technology (Zhuhai) Co.Ltd was established at Zhuhai, China in 2004 with main profession of manufacturing inkjet ink. TrendVision has developed creative technology, high efficiency in manufacturing, stringent managing process and provide excellent services regarding inkjet ink products or solutions to clients in these few years.

TrendVision covers a wide variety of product area such as inks compatible to inkjet printers, wide format printer and digital textile printing machine. In order to provide high quality services to customers, TrendVision has established four main operating centre which consist of Research and Development (R&D), Manufacturing, sales & marketing and last but not least administration. The main responsibilities of these four operating centre are communicate, backup each other in terms of operating and making decision, ensure the smoothness of operating process, provide good customer care and create higher commercial value for customers.

TrendVision has always maintain a prospective vision, the company will strive to achieve excellence in the future, and at the same time based on the corporate philosophy of pragmatism, creativity, meticulous, everlasting to

喷墨技术/INKJET TECHNOLOGY 行业领跑/ALWAYS A STEP AHEAD

智能化生产/AUTOMATION INK PRODUCTION

- 采用最新全智能自动投料设备。
- 准确无误控制原材料分配，有效提高生产效率并确保质量。
- 年产量达8000吨。

- Top grade ink manufacturing technology with automatic feeding.
- High ratio precision on raw materials pouring control for enhance product quality and production efficiency.
- Production capacity up to 8000 tons annually.



专业染料提纯/PURIFYING DYESTUFF



- 采用纳米级提炼技术，去除不必要杂质。
- 精炼度高达99.8%，不会损坏打印喷头。
- 精炼后的染料主要用于桌面墨水，宽幅墨水和数码印花墨水，包括直接染料，活性染料，酸性染料。

- Used the Nano filtration technology to clean off the unnecessary particles of dye purifying.
- The purity clean precision is more than 99.8% and it is safe use for all kind of inkjet print head.
- The dye stuff is use for Desktop, Wide format and Digital textile inks with included the Direct dyes, Reactive dyes, Acid dyes.

工业化色膏研磨/MILLING COLOR PASTE

- 通过工业级纳米研磨设备，使游离的色膏分子，加以稳定处理。
- 完成后的色膏用于生产环保弱溶剂墨水，热转印墨水和UV固化墨水。

- Through Nanometer milling machine for dispersion the color paste
- particle into nano level and stable condition.
- The color paste is use for produce out the Eco solvent ink, sublimtion ink, and UV curable ink.



专业研发团队/R&D DEPARTMENT



- 致力于研发高品质墨水，如染料墨水，颜料墨水，热转印墨水，铜版纸墨水，环保弱溶剂墨水，UV固化墨水，医疗胶片墨水等等。
- 应用领域广泛用于商业广告，橱窗展示，摄影作品，数码印花等等。
- 适用的打印设备包括桌面打印机，宽幅打印机和数码印花机。

- Have developed out various premium ink such as Dye ink, Pigment ink, Sublimation ink, Art paper ink, Eco solvent ink, UV curable ink, Testile pigment, acid dye ink, reactive dye ink and more.
- The scope of application further extended to advertisement, window display, commodities, photo studio background and etc.
- It is suitable use for Large format printers such as Epson, Canon, HP, Mimaki, Roland, Mutoh, Novajet and more.

严格的质量监管/QUALITY INSPECTION

- 我们拥有专业的检验设备，其中包括：X-Rite 8200光谱仪，离子分析仪，UV光谱仪，颜料粒径分析仪，表面张力仪，PH计，黏度计等等。
- 通过专业的设备，我们严格监管墨水的PH值，表面张力，粘度，电导度，密度等等，以确保我们出厂的商品都是以高品质的质量到客户手中。

- We have full range of sophisticated instruments for test and inspection with included X-Rite 8200 Spectrometer, Ion Chromatography, UV spectrophotometer, Pigment particular size analyzer, Surface tension meter, PH meter, Viscometer and more.
- With follow to process control criteria for inspection the PH value, Conductivity, Surface tension, Viscosity, Density and more to ensure that product quality is within the customer's requirements before delivery out to customer.





喷墨技术，行业领跑
Inkjet Technology
Always A Step Ahead

目录/CONTENTS

DESKTOP INKJET INKS/桌面型喷墨墨水

- 01 Epson L系列兼容颜料及染料墨水
Dye and Pigment ink For Epson L Series Printer
- 02 Canon Pixma G系列兼容颜料及染料墨水
Dye and Pigment ink For Canon Pixma G Series Printer
- 03 Brother T系列兼容颜料及染料墨水
Dye and Pigment ink For Brother T Series Printer
- 04 HP GT系列兼容颜料及染料墨水
Dye and Pigment ink For HP GT Series Printer
- 05 染料墨水
Dye Ink For Epson Desktop Printer
- 06 染料墨水
Dye Ink For Canon Desktop Printer
- 07 染料墨水
Dye Ink For HP/Brother/Lexmark Desktop Printer
- 08 颜料墨水
Pigment Inks For Epson/Canon/HP/Brother Desktop Printer
- 09 铜版纸颜料墨水
Art Paper Pigment Inks For Epson Desktop Printer
- 10 隐形防伪墨水
Fluorescent, Invisible, Security Inks For Piezoelectric Printer series
- 11 医疗胶片墨水
HD Medical Film Special Ink For Epson/Canon Desktop Printer
- 12 超优抗UV染料墨水
Ultra Premium UV Dye Ink For Epson/Canon/HP Desktop Printer
- 13 LED UV墨水
LED UV Ink For DX5/DX6/DX7 Flat Printer
- 14 热转印墨水
Sublimation Ink For Epson Desktop Printer

Epson L系列兼容颜料及染料墨水

Dye and Pigment ink For Epson L Series Printer



| Ink Code | Colour | Cartridge No | Dye Ink For Epson Printer |
|------------|---------|----------------------------|--|
| ED-K0196 | Black | T6641-6644/ T6721-6724/ | L100/L-101/L-110/L-111/L200/L201/L210/L303/L301/L-555/L-551/ L-550/L-358/L-355/L-353/L-351/L-301/L-300/L-303/L-350/M101/L455/ L558 /L1300 etc. |
| ED-C0030 | Cyan | | |
| ED-M0035 | Magenta | | |
| ED-Y0025CS | Yellow | | |
| ED-K0059 | Black | T7741/T7431/T1371 | M201/WP-M4011/K105/K100 |
| ED-K0130 | Black | T6731-6736/ T6741-6746 | L800/L801/L1800/L810/L850 |
| ED-C0069 | Cyan | | |
| ED-M0069 | Magenta | | |
| ED-Y0069 | Yellow | | |
| ED-LC0069 | Cyan | | |
| ED-LM0069 | Magenta | | |



- 1.首先拧开墨水瓶的瓶盖，同时
拔开瓶盖上的密封塞。
 - 2.使用瓶盖上的三角翼剖开瓶身
上的铝箔纸，把铝箔撕掉。
 - 3.微斜瓶身，朝注墨口注入相应的墨水。
1. Unscrew the bottle cap, lift the
sealing stopper at the same time.
 2. Under the help of triangular wing,
you can slit the aluminium foil and
tear it off.
 3. Slightly lean the bottle, refilling
towards the right hole.

Features and benefits :

- High color saturation, high fidelity.
- Ultrafiltration, no clogging caused.
- Weak acid or alkalescent formula, no corrosion problems.
- No bleeding, no smearing, high print quality.
- Quick dry formula, satisfaction at high speed printing.
- Water base formula, no toxicity, no chemical hazards. no environment pollution.
- Strict technology, modern manufacture process and three precision filtration treatment to keep droplet smaller than 0.2um.

特点和优点:

- 色彩精准，饱和度高度；
- 绝对过滤，不会堵头；
- 弱酸或碱性配方，保护喷头不腐蚀；
- 不毛边，不晕染，打印品质高；
- 水性快干配方，高度打印没问题；
- 不含重金属离子，健康环保；
- 严格的技术、先进的生产工艺，三级超细过滤处理，控制墨滴小于0.2um。

Canon Pixma G系列兼容颜料及染料墨水

Dye and Pigment ink For Canon Pixma G Series Printer



| Ink Code | Colour | Cartridge No | Dye Ink For Brother Printer |
|------------------|---------|----------------|---|
| CD-K079(Dye) | Black | GI-190BK C M Y | Canon Pixma G1800/G2800/G3800/G1000/G2000/G3000 |
| CD-C079(Dye) | Cyan | GI-790BK C M Y | |
| CD-M079(Dye) | Magenta | GI-890BK C M Y | |
| CD-Y079(Dye) | Yellow | GI-990BK C M Y | |
| CP-K016(Pigment) | Black | | |



Canon Pixma G系列兼容
颜料及染料墨水，配全新
开模瓶子及盖子，墨水打
印流畅，加墨很方便，给
您更多惊喜...

Trendvision's launching
new dye and pigment ink
for Canon Pixma G series
refillable ink tank printer.
It is excellent for text and
colorful pictures
printing...

Features and benefits :

- Printing ink fluency, clear text printing and vivid color for pictures printing.
- Great compatibility, have anti clogging problem with nano filter fineness of 0.1 micron for preserve the print head more long self life, keep the print head clean, maximum improve for printing reliability and efficiency with best fast drying time.
- 100% compatible to the original ink.
- Through triple filtering system for clean off the contamination particles of ink for guarantee no clogging problem to the print head.

特点和优点:

- 打印流畅,清晰锐利的文字与色彩丰富的照片;
- 兼容性强,墨水含有防堵头因子及超精细0.1micron过滤精度,益于延长喷头寿命.可保持喷头清洁,最大限度提升打印的可靠性及生产力,具有最佳的干燥时间;
- 与原装墨水100%兼容;
- 经三级过滤体系灌装,清除了墨水中的杂质颗粒,保证不堵喷头.

Brother T系列兼容颜料及染料墨水

Dye and Pigment ink For Brother T Series Printer



| Ink Code | Colour | Cartridge No | Dye Ink For Brother Printer |
|-------------------|--------|--------------|------------------------------------|
| BRD-K033(Dye) | | BT6000BK | Brother DCP-T300/T500W/T700W/T800W |
| BRD-C033(Dye) | | BT5000C | |
| BRD-M033(Dye) | | BT5000M | |
| BRD-Y032(Dye) | | BT5000Y | |
| BRP-K002(Pigment) | | | |



Features and benefits :

- Environmental friendly ink, Vivid color and high saturation
- Imported paste and not damage for print head
- Under clean room production, through triple filter system, precision filter size below 0.2μ .
- With thoroughly cleaning for impurity particles to eliminate the print head block problem. It is 100% compatible with original ink, vivid colors and outstanding for photo printing.
- No bleeding, no smearing, high print quality.

特点和优点:

- 绿色环保型墨水, 色彩鲜艳, 饱和度高;
- 进口色浆, 不堵头墨水;
- 墨水生产于无尘车间, 墨水经三级过滤, 精密过滤达 0.2μ 以下;
- 彻底清除了墨水中易堵喷头的杂质颗粒, 不堵喷头;
- 与原装墨水100%兼容, 色彩鲜明亮丽, 照片效果出众。

HP GT系列兼容颜料及染料墨水

Dye and Pigment ink For HP GT Series Printer



| Ink Code | Colour | Cartridge No | Dye Ink For HP Printer |
|------------------|--------|--------------|---|
| HD-K051(Dye) | | HP-GT51BK | HP DeskJet GT 5810/5820 All-in-One etc. |
| HD-C052(Dye) | | HP-GT52C | |
| HD-M052(Dye) | | HP-GT52M | |
| HD-Y052(Dye) | | HP-GT52Y | |
| HP-K051(Pigment) | | | |



Features and benefits :

- Through the special customized, the ink is excellent stability, fluency printing, fit for fast and continuous printing and durable which suitable for high printing user.
- With adjusted of ink viscosity and surface tension for further enhance the printing fluency and ink stability.
- Strong color reduction, fast drying, good permeability, strong adhesive force.
- 100% compatible, ink contained with anti head blocking and 0.1micron filtration precision, benefit to extend the life of print head.

特点和优点:

- 对于高强度打印的行业用户, 经过特殊定制, 墨水质量稳定, 流畅性, 高打印量打印头耐久性好;
- 调整了墨水的黏度和表面张力, 使流畅性和墨水稳定性能突出;
- 墨水色彩还原好, 干燥速度快, 渗透性能适宜, 附着能力强;
- 兼容性强, 墨水含有防堵头因子及超精细0.1micron过滤精度, 益于延长喷头寿命。

Dye Ink /染料墨水

For Epson Desktop Printer

| | | | |
|-------------|---|---|---|
| ED-K0196 | ⬆ | T1621-T1624/T1631-T1634/ T1661-T1664/T1671/ | ME 10/ME 101/ME 301/ME 401/WorkForceWF-2510WF/2520/2530WF/2540/ 2010W/2521/2531/2541/303/XP-103/XP-203/XP-33/XP-306/XP-406/XP-407/ XP-207/XP303/XP-313/XP-413/XP102/XP 202/XP 30/XP 302/XP 402/XP105/ XP 205/XP 305/XP 405/XP-405WH/XP-415/XP-412/XP-315/XP-312/XP- 212/ XP-215 /XP 200/XP 300/XP 400/Work ForceWF-PX-435A/PX-405A/ PX-045A/PX-535F/PX-505F/PX-105/PX-436A/ PX-046A etc. |
| ED-PK0018 | ⬆ | T2601/T2611-2614(26) | XP-702/XP-701/XP-700/XP-605/XP-601/XP-600/XP-801/XP-800 etc. |
| ED-K0033 | ⬆ | T2621/T2631-2634(26XL) | |
| ED-C0033 | ⬆ | T2721/T2731-2734 | |
| ED-M0033 | ⬆ | T2741/T2751-2754/T2561-2564 | |
| ED-Y0033 | ⬆ | | |
| ED-K0033 | ⬆ | IC70/T2421-2426(26) | XP-850/XP-750/XP775/805 |
| ED-C0033 | ⬆ | T2431-2436(26XL) | |
| ED-M0033 | ⬆ | T2771-2776 | |
| ED-Y0033 | ⬆ | T2781-2786 | |
| ED-LC0033 | ⬆ | | |
| ED-LM0033 | ⬆ | | |
| ED-K0126 | ⬆ | T1251-T1254 | T12/T22/TX120/TX129/TX320F/TX420W/N11/NX125/NX127/NX420/NX625/ ME32/ME33/ME320/ME330/ME office560W/620F/900W/960W |
| ED-C0140 | ⬆ | T1281-T1284 | Work force320/323/325/520/630 etc. |
| ED-M0140 | ⬆ | T1331-T1334 | |
| ED-Y0143 | ⬆ | T1411-T1414 | |
| ED-K0125 | ⬆ | T7011-T7014/T6771-T6774/T676XL | WORKFORCE PRO 4015DN/4025DN/4515DN/4525DNF/4535DNF/4545DNF/4545DTWF/ 120BK-220CMY/IC90K/C/M/Y/ |
| ED-C0090 | ⬆ | T793180/T793280/T793480/T793580/ | 4095DN/4595DNF/WORKFORCE PRO WP-4530/WP-4540/WP-4020 WP-4011/WP-4511/WP-4521/WP-4531P/B705F/PX-B700/WF5113/WF5632/ WF3011 etc. |
| ED-M0090 | ⬆ | T1411-T1414/T1431-T1434 | |
| ED-Y0090 | ⬆ | | |
| ED-K0196 | ⬆ | T0851-T0856/T1221-T1226/ T0491-T0496/T0821-T0826/ | Stylus Photo R330/R230/R210/T50/R270/R280/R285/R290/R1390/ R1400/T50/T60/RX610/R260/R380/RX580/R265/R360/ TX700W/ TX800FWArtisan 600/ 610/ 700/ 800/ 810/TX700W/TX800FW |
| ED-C0040CS | ⬆ | T0821N-T0826NT0851N-T0856N | |
| ED-M0026CS | ⬆ | T0981-T0986/T0791-T0796/ T0811-T0816 | |
| ED-Y0025CS | ⬆ | | |
| ED-LC0021CS | ⬆ | | |
| ED-LM0023CS | ⬆ | | |
| ED-K0126 | ⬆ | T731-T734/T731N-T734N/ T091N-T094N/T0681-T0684/ T0691-T0694/T1171-T1174/ T1031-T1034/T1091-T1094 | ME30/ME300/office70/office80W/360/600F/700FW/Work force30/40/ 1100/310/500/600/610/T10/T11/T13/T20/T23/T24/T33/T40W/T1100/ TX100/TX110/TX105/TX160/TX115/TX117/TX119/TX109/TX200/ SX210/SX310/SX410/SX510/SX600 |
| ED-C0040CS | ⬆ | | |
| ED-M0026CS | ⬆ | | |
| ED-Y0025CS | ⬆ | | |
| ED-K0016 | ⬆ | T05852/T5846/ICCL45 | PictureMate PM210/PM215/PM235/PM250/PM270/PM310 PictureMate Pm200/ 240/260/280/290/ Show PM300/Charm PM225EPSON E-300/300L/330/330SG/500/520/530C/600/ 70/720/800 |
| ED-C0091 | ⬆ | | |
| ED-M0091 | ⬆ | | |
| ED-Y0091 | ⬆ | | |
| ED-Mk0126 | ⬆ | T5641-T5649/T0591-T0599/ T1571-T1579 | Stylus Photo R1200 R2400/R4800/R2880/R3000 |
| ED-PK0008 | ⬆ | | |
| ED-LK0009 | ⬆ | | |
| ED-LLK0010 | ⬆ | | |
| ED-C0008 | ⬆ | | |
| ED-M0008 | ⬆ | | |
| ED-Y0008 | ⬆ | | |
| ED-LC0003 | ⬆ | | |
| ED-LM0006 | ⬆ | | |
| ED-K0126 | ⬆ | T0870-874/877/878/879 T1591-1599/IC66 | Stylus Photo R1900/R2000/Stylus Photo PX-7V |
| ED-C0007 | ⬆ | | |
| ED-M0007 | ⬆ | | |
| ED-Y0007 | ⬆ | | |
| ED-R0025 | ⬆ | | |
| ED-PK0008 | ⬆ | | |
| ED-OR0006 | ⬆ | | |
| CW-GL003 | ⬆ | | |
| ED-K0126 | ⬆ | T0341-T0348 | Stylus Photo 2100/2200 |
| ED-PK0008 | ⬆ | | |
| ED-LK0009 | ⬆ | | |
| ED-C0021 | ⬆ | | |
| ED-M0001 | ⬆ | | |
| ED-Y0001 | ⬆ | | |
| ED-LC0010 | ⬆ | | |
| ED-LM0013 | ⬆ | | |
| ED-K0126 | ⬆ | T0540-544/547/548/549 | Stylus Photo R800/R1800 |
| ED-C0007 | ⬆ | | |
| ED-M0007 | ⬆ | | |
| ED-Y0007 | ⬆ | | |
| ED-R0025 | ⬆ | | |
| ED-PK0008 | ⬆ | | |
| ED-BL0016 | ⬆ | | |
| CW-GL003 | ⬆ | | |

Dye Ink /染料墨水

For Canon Desktop Printer

| Ink Code | Colour | Cartridge No | Dye Ink For Canon Printer |
|-------------|--------|--|--|
| CD-K071 | ⬆ | PGI-570/CLI-571/PGI-270/CLI-271/ | MG5750/MG5751/MG5752/MG6850/MG6851/MG6852/MG6853/ MG7750/ |
| CD-C071 | ⬆ | BCI-370/BCI-371/PGI-470/CLI-471/ | MG7751/MG7752/MG7753/MG5720/MG5721/ MG5722/MG6820/MG6821/ |
| CD-M071 | ⬆ | PGI-770/CLI-771/PGI-870/CLI-871/ | MG6822/MG7720/MG7730/MG6930/MG5730/MG7740/MG6840/MG5740/ |
| CD-Y071 | ⬆ | PGI-970/CLI-971/PGI-170/CLI-171/ | MG7770/MG6870/MG5770/MG7780/MG6880/MG5780/MG7790/MG5795/ |
| CD-PK002 GY | ⬆ | PGI-670/CLI-671 | MG5790/MG7710/MG6810/MG5710/ MG7760/MG6860/MG5760 |
| CD-K0073 | ⬆ | PGI-1300/ PGI-1400/ PGI-1500/ | Canon MAXIFY MB2050/MB2350/iB4050/MB5050/MB5350/MB2040/ |
| CD-C0073 | ⬆ | PGI-2300/ PGI-2400/ PGI-2500 | MB2340/iB4040/MB5040/MB5340/MB2030/MB2330/iB4030/MB5030/ |
| CD-M0073 | ⬆ | | MB5330 |
| CD-Y0073 | ⬆ | | |
| CD-K003 | ⬆ | CLI-42 BK/GY/LGY/C/M/Y/PC/PM | Canon PRO-100 |
| CD-C042 | ⬆ | | |
| CD-M042 | ⬆ | | |
| CD-Y015 | ⬆ | | |
| CD-GY001 | ⬆ | | |
| CD-LGY001 | ⬆ | | |
| CD-PC003 | ⬆ | | |
| CD-PM003 | ⬆ | | |
| CD-K0033 | ⬆ | PG-40/41/PG-830/831/PG-50/51/ PG-210/211/PG-810/811/815/816/ 88/98/740/741/840/841/PG-845/846 PG-48/CL-58/PG-83/CL-93/PG-87/ CL-97/BC-310/311/CL-835/CL-836/ PG-745/746/PG-245/246/PG-845846/ PG-945/CL-946/CL-241/BC-340 BC-341/CL-706 | CANON PIXMA-IP1180/IP1200/IP1600/IP1880/IP2200/IP2580/IP6210D/ MP150/MP160/MP170/MP180/MP450/MP460/MX338/MP245/MP286/MP486/ MP258/MP268/MP276/MP486/MP496/ PIXMA MX328/MX338E408/E510/ E600/E610/E618/MG4270/MG4270/MG4120/MG3580/MG3570/MG3530/ MG3220/MG3170/MG3120/MG2590/MG2570/MG2520/MG2490/MG2470/ MG2400/MG2270/MG220W/PP-201/P200/IP2700/IP1188/IP2880/IP2880/ IP2820/IP2788/IP2780/IP2772/IP2770/IP2702/IP2880S |
| CD-C009 | ⬆ | PGI-850/CLI-851/750751/ PGI-650/CLI651/551/450/ 451/PGI-525/526/250/251 510/511/425/426/350/351 | PIXMA IP7250/ MG6350/MG5450/MX925/MG7150/MG6450/MG5550/ IP7220/MX922/MG5520/MG6420/MG7120/MG5420/MG5430/IP7230/ MG5530/ MG7130/MG6330/MG5440/MG6340/IP7240(RUSSIA)/MX924/ MG6440/ MG7140/MG5440/IP7250/ MG 6350/ MG 5450/MX 925/IP7260/ MG5460/MX 726 /MX 926/IP7270/ MG 6370/ MG 5470/MX 727/MX927/ MG5570/MG6470/IP7280/MG6380/MG5480/MX928/MX728/MG7180/ MG5580/MX928/MX927/MX922/MX897/MX892/MX882/MX728/MX727/ /IP8780/IX6880/IX6780 |
| CD-K055 | ⬆ | | |
| CD-C059 | ⬆ | | |
| CD-M059 | ⬆ | | |
| CD-Y059 | ⬆ | | |
| CD-PK001 GY | ⬆ | | |
| CD-K003 | ⬆ | PGI-35BK CLI-36C BCI-19 (Japan) | Canon Mini260/IP100 |
| CD-C028 | ⬆ | | |
| CD-M029 | ⬆ | | |
| CD-Y024 | ⬆ | | |
| CD-K003 | ⬆ | BCI-7E | PIXUS IP3100/IP3300/IP3500/IP4100/IP4200/IP4300/IP4500/IP5200R/ IP6100D/IP6600D/IP6700D/7100/IP7500/IP8100/IP8600/IP9910/IX5000/ IP4100R/PIXUSMP500/MP510/MP520/MP600/MP610/MP770/MP790/MP800/ MP810/MP900/MP950/MP960/MP970/MP830/MP850/PIXUS Pr09000 |
| CD-C020 | ⬆ | | |
| CD-M019 | ⬆ | | |
| CD-Y018 | ⬆ | | |
| CD-PC003 | ⬆ | | |
| CD-PM003 | ⬆ | | |
| CD-K003 | ⬆ | CLI-220/221/CLI-320/321 CLI-520/521/CLI-525/526 CLI-725/726/CLI-820/821 CLI-825/826 CLI-225/226/325/326 | CANON PIXMA IP3600/IP3680/IP4600/IP4680/IP4850/IP4980/MP540/ MP545/MP638/MP620/MP630/MP980/MX868/MX885/IP4880/MG5180/ MG5250/MG5150/MG6150/MG5280/MG6180/MG8180/MG8150/IX6550 PIXMA MG8170/6170//IX6520/IX7000/IX6880/IX6870/IX6830/IX6820/ IX6770/IX6580/IX6560 |
| CD-C055 | ⬆ | | |
| CD-M055 | ⬆ | | |
| CD-Y058 | ⬆ | | |
| CD-PK013 GY | ⬆ | | |
| CD-K004 | ⬆ | CLI-3e/6/8/PGI-9 series PGI-29/PGI-27 | I550/I850/I6100/I6500/I900D/I950/I960/I990/I9100/I9950/I9900/IP8500/ PRO9000/PIXMA IP4200/IX4000/6000D/6700D/9500 BJC 3000/6000/6100/6200/6500/S400/S450/S500/S520/S530/S600/ S750/S4500/I550/I850/I6100/I6500/BJC 3000/6000/6100/6200/6500/ S400/S450/S4500/BJC 8200/S800/S820/S830/S900/S9000/I900D/I950/ I960/I990/I9100/I9950/PIXMA IP6000D/IP8500PRO-1/PRO-10/PRO-9000 |
| CD-C016 | ⬆ | | |
| CD-M017 | ⬆ | | |
| CD-Y015 | ⬆ | | |
| CD-PC017 | ⬆ | | |
| CD-PM003 | ⬆ | | |
| CD-G0018 | ⬆ | | |
| CD-R0016 | ⬆ | | |

Dye Ink /染料墨水

For HP/Brother/Lexmark Desktop Printer

| Ink Code | Colour | Cartridge No | Dye Ink For HP Printer |
|----------|--------|---|--|
| HD-K012 | ● | HP15/45/78 | Deskjet 930/940/950/952/955/960/970/980/990/1220/P1000/1215/1218/1115/1315/750/685/k60/k80/v409300/Digital Copier 310/Fax 1200 /1230/Officejet 5100 series/Photosmart 1000/1100/1200/1315 Series/PSC 700 series /PSC 900 series |
| HD-C015 | ● | | |
| HD-M015 | ● | | |
| HD-Y010 | ● | | |
| HD-K035 | ● | | |
| HD-C035 | ● | HP 940/950B/951C/M/Y | HP Officejet Pro 8600e/8100/Officejet Pro 8000/8500 |
| HD-M035 | ● | | |
| HD-Y035 | ● | | |
| HD-K039 | ● | | |
| HD-C039 | ● | | |
| HD-M039 | ● | HP 970/971 | HP Officejet Pro X451dw/X551dw/X476dw/X576dw |
| HD-Y039 | ● | | |
| HD-K003 | ● | | |
| HD-C004 | ● | | |
| HD-M009 | ● | | |
| HD-Y004 | ● | HP10/11 | 500/800/120/2000C/2280/2800/3000/2800dtn/1000/1100dd/1100dtn/1200d/1200dn/1200dtn/1200dtn/2200se/2200xi/2230/2250/2250tn/2300/2300dtn/2300n/2600/2600dn/K850Copyjet Series cp1700/cp1700d/cp1700ps/100100plus/110plus/110plus nr |
| HD-LC009 | ● | | |
| HD-LM009 | ● | | |
| HD-K006 | ● | | |
| HD-C030 | ● | | |
| HD-M030 | ● | HP 02/801/802/177/363 | Photosmart 3210/3310/8250/C5140/C5150/C5180/C6150/C6180/C6180/C6188/C6200/C7200 series/C8150/C8180/C8188/C8188/C6160/C6163/C6168/D7145/D7155/D7160/D7163/D7168/D7200/D7400/D7345/D7355/D7360/D7363/D7368 |
| HD-Y030 | ● | | |
| HD-LC030 | ● | | |
| HD-LM030 | ● | | |
| HD-K012 | ● | | |
| HD-C003 | ● | HP21/22/56/57/27/28/816/817/93/94/95 | Desk jet 450/3320/3322/3323/3325/3420/3425/3450/3520/3535/3550/3620/3650/3653/3740/3745/3843/3845/3847/450/5150/5151/5160/5550/5551/5562/5650/5652/5655/5850/9650/9670/9680 |
| HD-M003 | ● | | |
| HD-Y003 | ● | | |
| HD-K005 | ● | | |
| HD-C011 | ● | | |
| HD-M011 | ● | HP18/88 | Office jet Pro K550/K5300/K5400 /L7380/L7580 /K550dtn/k8600 series/L7000/L7400 series Officejet Pro L7580/7680/7780 |
| HD-Y007 | ● | | |
| HD-K017 | ● | | |
| HD-C031 | ● | | |
| HD-M031 | ● | | |
| HD-Y031 | ● | HP 862/564/364/178/920 | Photo smart B8550/C6380/D5463/B8553/C6383/D5468/B8558/C6480/C5300/D5460 Officejet 6000 |
| CD-K003 | ● | | |
| HD-C028 | ● | | |
| HD-M003 | ● | | |
| HD-Y003 | ● | | |
| CD-K003 | ● | Hp61 BK/C/HP60/60XL HP704 BK/C HP802 BK/C | Deskjet 1000/1050/2000/2050/3000/3050/J410a/J510a/D2500 series / Deskjet F4200 series |
| HD-C028 | ● | | |
| HD-M003 | ● | | |
| HD-Y003 | ● | | |
| CD-K003 | ● | | |

| Ink Code | Colour | Cartridge No | Dye Ink For Brother Printer |
|----------|--------|--|--|
| BRD-K030 | ● | LC103/LC107/LC107/LC105 LC113/LC117/LC123/LC127 LC125/LC133/LC137/LC135 LC567/LC565/LC563 | BROTHER MFC-J4310DW/ J4410DW/ J4510DW/ J4610DW/ J4710DW/ MFC-J285DW/ J450DW/ J470DW/ J475DW/ J650DW/ J870DW/ J875DW/ MFC-J4210N/ J4510N/DCP-J4215N/552DW/ J752DW/MFC-J470DW/ J870DWDCP-J4110DW/MFC-J2310/J2510 |
| BRD-C030 | ● | | |
| BRD-M030 | ● | | |
| BRD-Y030 | ● | | |
| BRD-K016 | ● | | |
| BRD-C016 | ● | LC 39/985 | BROTHER DCP-J125/J315W/J515W BROTHER MFC-220/J265W/J410/J415W |
| BRD-M016 | ● | | |
| BRD-Y016 | ● | | |
| BRD-K012 | ● | | |
| BRD-C012 | ● | | |
| BRD-M012 | ● | LC 11/16/38/61/ 65/67/980/990/ 1100 | BROTHER DCP-145C/ DCP-165C/ MFC-250C/790CW/820CW/990CW / DCP-385C/585CW/6690CW, MFC-490CW /790CW/990CW/5490CN/ 5890CN/6490CW/6890CW/DCP-6690CW, MFC-5890CN/6490CW/6890CW |
| BRD-Y012 | ● | | |
| BRD-K012 | ● | | |
| BRD-C008 | ● | | |
| BRD-M006 | ● | | |
| BRD-Y008 | ● | LC 37/51/57/960/ 1000 | BROTHER DCP-130C/330C/540CN/750CW BROTHER FAX-2480C BROTHER MFC240CN/440CN/660CN/665CW/1360/3360C/5460C |
| BRD-K012 | ● | | |
| BRD-C008 | ● | | |
| BRD-M006 | ● | | |
| BRD-Y008 | ● | | |

| Ink Code | Colour | Cartridge No | Dye Ink For Lexmark Printer |
|----------|--------|--------------------------------|---|
| LD-K006 | ● | 100/105/108 | S305/S405/S505/S605/S308/S408/S508/S608/PRO205/705/805/905/208/708/808/908 |
| LD-C002 | ● | | |
| LD-M002 | ● | | |
| LD-Y002 | ● | | |
| LD-K003 | ● | | |
| LD-C001 | ● | Lexmark Black Lexmark Color | 15M2971/17G0050/16G0055/17G0648/10N0026/18L0032/12A1970 Color Jetprinter 1000/1020/1100/2030/2050/3000/3200/5000/5700/7000/7200/ Z11/Z31/Z42/Z43/Z45/Z51/Z54/Z82 /P122/P706/P715/F4270/X63/X70/X73/X80/X125/X4250/Color Jetprinter Z12/Z22/Z32 |
| LD-M001 | ● | | |
| LD-Y001 | ● | | |
| LD-K006 | ● | | |
| LD-C002 | ● | | |



Pigment Inks/ 颜料墨水

For Epson/Canon/Hp/Brother Desktop Printer

| Ink Code | Colour | Cartridge No | Pigment Ink For Epson Printer |
|--------------|--------|---|--|
| EP-K0010 | ● | T7011-T7014/IC90K/C/M/Y T6771-T6774/T676XL/ 120BK-220CMY | WORKFORCE PRO 4015DN/4025DN/4515DN/4525DNF/4535DWF/4545DTWF/4095DN/4595DNF/WORKFORCE PRO WP-4530/WP-4540/WP-4020/WORKFORCE PRO WP-4011/WP-4511/WP-4521/WP-4531 PX-B705E/PX-B700 |
| EP-C0010 | ● | | |
| EP-M0010 | ● | | |
| EP-Y0010 | ● | | |
| EP-K0036 | ● | | |
| EP-C0035 | ● | T0851-T0856/T1221-T1226/ T0491-T0496/T0821-T0826/ T0821N-T0826NT0851N-T0856N T0981-T0986/T0791-T0796/ T0811-T0816 | Stylus Photo R330/R230/R210/T50/R270/R280/R285/R290/R1390/R1400/T50/T60/RX610/R260/R380/RX580/R265/R360/ TX700W/ TX800FWArtisan 600/ 610/ 700/ 800/ 810/TX700W/TX800FW |
| EP-M0035 | ● | | |
| EP-Y0035 | ● | | |
| EP-LC0035 | ● | | |
| EP-LM0035 | ● | | |
| EP-K0033 | ● | T2601/T2611-2614(26)T2621/ T2631-2634(26XL)T2721/T2731-2734 T2741/T2751-2754/T2561-2564/IC70/ T2421-2426(26)T2781-2786 T2431-2436(26XL)T2771-2776 | XP-850/XP-750/XP775/805/XP-702/XP-701/XP-700/XP-605/XP-601/XP-600/XP-801/XP-800 etc. |
| EP-C0033 | ● | | |
| ED-M0033 | ● | | |
| EP-Y0033 | ● | | |
| EP-LC0033 | ● | | |
| EP-LM0033 | ● | T6641-6644/T6721-6724/ | L100/L-101/L-110/L-111/L200/L201/L210/L211/L303/L301/L-555/L-551/L-550/L-358/L-355/L-353/L-351/L-301/L-300/L-303/L-350/M101/L455/L558 /L1300 etc. |
| EP-K0025 | ● | | |
| EP-C0025 | ● | | |
| EP-M0025 | ● | | |
| EP-Y0025 | ● | | |
| EP-K0029 | ● | T6731-6736/T6741-6746 | L800/L801/L1800/L810/L850 |
| EP-C0029 | ● | | |
| EP-M0029 | ● | | |
| EP-Y0029 | ● | | |
| EP-LC0029 | ● | | |
| EP-LM0029 | ● | T5641-T5649/T0591-T0599/ T1571-T1579 | Stylus Photo R1200 R2400/R4800/R2880/R3000 |
| EP-K0010 | ● | | |
| EP-PK0010 | ● | | |
| EP-LK0028WF | ● | | |
| EP-LLK0029WF | ● | | |
| EP-C3000 | ● | T0540-544/547/548/549 | Stylus Photo R800/R1800/ |
| EP-M3000 | ● | | |
| EP-Y3000 | ● | | |
| EP-LC3000 | ● | | |
| EP-LM3000 | ● | | |
| EP-K0011 | ● | T0870-874/877/878/879/ T1591-1599/IC66 | Stylus Photo R1900/R2000/Stylus Photo PX-7V |
| EP-PK0011 | ● | | |
| EP-C0011 | ● | | |
| EP-M0011 | ● | | |
| EP-Y0011 | ● | | |
| EP-R0011 | ● | T0870-874/877/878/879/ T1591-1599/IC66 | Stylus Photo R1900/R2000/Stylus Photo PX-7V |
| EP-BL0011 | ● | | |
| EP-GL0011 | ● | | |
| EP-K0012 | ● | | |
| EP-PK0012 | ● | | |
| EP-C0012 | ● | PGI-1300/ PGI-1400/ PGI-1500/ PGI-2300/ PGI-2400/ PGI-2500 | Canon MAXIFY MB2050/MB2350/iB4050/MB5050/MB5350/MB2040/MB2340/iB4040/MB5040/MB5340/MB2030/MB2330/iB4030/MB5030/MB5330 |
| EP-M0012 | ● | | |
| EP-Y0012 | ● | | |
| EP-R0012 | ● | | |
| EP-OR0012 | ● | | |
| EP-GL0012 | ● | PGI-820/810/825/320/830/750/850/450/ 350/40/570/270/770/870/970/670/170 | Pigment black ink for Canon Inkjet printers |
| EP-K0015 | ● | | |
| EP-C0015 | ● | | |
| EP-M0015 | ● | | |
| EP-Y0015 | ● | | |

| Ink Code | Colour | Cartridge No | Pigment Ink For Canon Printer |
|----------|--------|--|---|
| CP-K015 | ● | PGI-820/810/825/320/830/750/850/450/ 350/40/570/270/770/870/970/670/170 | Pigment black ink for Canon Inkjet printers |
| CP-C015 | ● | | |
| CP-M015 | ● | | |
| CP-Y015 | ● | | |
| CP-K016 | ● | | |
| CP-C016 | ● | PGI-1300/ PGI-1400/ PGI-1500/ PGI-2300/ PGI-2400/ PGI-2500 | Canon MAXIFY MB2050/MB2350/iB4050/MB5050/MB5350/MB2040/MB2340/iB4040/MB5040/MB5340/MB2030/MB2330/iB4030/MB5030/MB5330 |
| CP-M016 | ● | | |
| CP-Y016 | ● | | |
| CP-K016 | ● | | |
| CP-C016 | ● | | |

| Ink Code | Colour | Cartridge No | Pigment Ink For Hp Printer |
|----------|--------|---|--|
| HP-PK068 | ● | HP Pigment BK HP 940/950BK/951CMY HP970/971 | HP 15/45/21/56/27/816/818/60/704/HP 802 HP Officejet Pro 8000/8500 HP Officejet PRO 8100 ePrinter/Officejet PRO 8600 HP Officejet Pro X451dw/X551dw/X476dw/X576dw |
| HP-K097 | ● | | |
| HP-C097 | ● | | |
| HP-M097 | ● | | |
| HP-Y097 | ● | | |

| Ink Code | Colour | Cartridge No | Pigment Ink For Brother Printer |
|----------|--------|------------------|--|
| BRP-K001 | ● | LC 41/47/900/950 | Brother FAX-1840C/2440C/BROTHER DCP-110C/310CN/1940C/2440C |
| BRP-C001 | ● | | |
| BRP-M001 | ● | | |
| BRP-Y001 | ● | | |
| BRP-K001 | ● | | |

Art Paper Pigment Inks/铜版纸颜料墨水 For Epson Desktop Printer



将你的喷墨打印机转变成“胶版印刷机”

Turn your inkjet printer into an "offset machine"

| Ink Code | Colour | Cartridge No | Art Paper Pigment Ink For Epson Printer |
|------------|---------------|-----------------------------------|--|
| EP-MK0012 | Black | T1251-T1254/T1281-T1284 | ME320/ME330/560W/620F/900W/960WME30/ME300/323/325/T11/ |
| EP-C0019 | Cyan | T1331-T1334/T1411-T1414 | T13/T20/T23/T24/T33/T40W/T1100/TX100/TX110/TX105/TX160/ |
| EP-M0019 | Magenta | T0981-T0986/T731-T734/73N | TX200/TX210/TX300F/TX410/TX510/TX515/TX550/TX600/TX700/ |
| EP-Y0019 | Yellow | T0821-T0826/82N/T0851-T0856/85N | B300/B310N/510N/B518DN/SX20/SX100/SX110/SX105/SX115/SX310/ |
| EP-LC0019 | Light Cyan | T091N-T094N/T0681-T0684/ | SX410/SX510/SX600/R270/R280/R285/R290/R1390/R1400/T50/T60/ |
| EP-LM0019 | Light Magenta | T0691-T0694/T1171-T1174 | TX700W/TX800F/W700/800/810/P50/T50/R290/R230/R270/R285/ |
| EP-OR0012 | Orange | T1091-T1094/T0811-T0816/ | ME10/ME101/ME301/ME401/2520/2530WF/2540/2010W/2521/ |
| EP-R0012 | Red | T0791-T0796/T0870-874/877-879 | 2531/2541/303/XP-103/XP-203/XP-33/XP-306/XP-406/XP-407/L810/ |
| EP-GO0012 | Green | T1591-T1599/T1571-T1579/IC66 etc. | L801/L101/R330/R3000/R2000/R1900/R1800/R800/ etc. |
| EP-BLO0012 | Blue | Universal Epson Series | Universal Epson Series Printer |

这在喷墨领域是一次历史性的革新 **It's a REVOLUTION in INK TECHNOLOGY!**

特点和优点/Features and benefits:

- Nano-Resin Pigments-Anti-UV Fade-Proof Quality /纳米级树脂颜料型墨水,具有抗UV,防水耐光的性能
- Quick Drying, without Heater Modification/快干性,无需安装加热装置
- Perfect Results on Art Paper & All Types of Papers, Waterproof, Durable/可适用铜版纸等无涂层介质,防水,可持久保存
- Good Colour Dispersion & Adhesion, Non-Clogging/良好的分散性及色彩饱和度,不堵塞喷头
- High stability: 3-month long high-low temperature cycle test passed /高稳定: 所有墨水通过3个月高低温循环
- Superior scratch resistance from improved/拥有改善后的超强耐磨性能

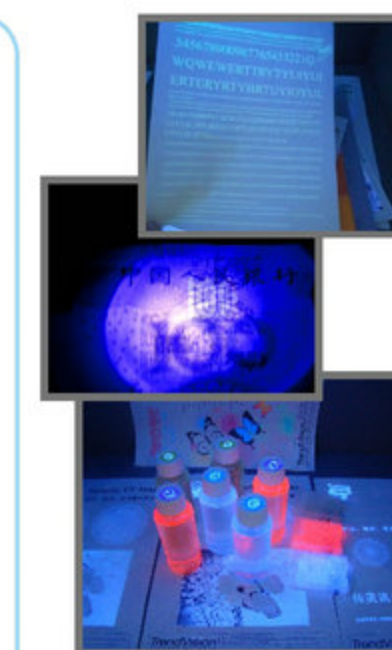
Fluorescent, Invisible, Security Ink/ 隐形防伪墨水 For Piezoelectric Printer Series



| Ink Code | Colour | Inks Type | Used For Desktop & Wide Format Printer |
|----------|---------|-----------|--|
| SI-PC001 | Black | Pigment | Epson Brother Piezoelectric Printer series等等, etc. |
| SI-PM001 | Magenta | | |
| SI-PY001 | Yellow | | |
| SI-PG001 | Cyan | | |

隐形墨水亮点Selling Point:

- ❖ 与常规墨水配方工艺一致, 不堵塞喷头, 安全环保, 图像可持久性保存
- ❖ 创造奇幻世界, 感受梦幻生活
- ❖ 适用于压电式喷墨打印而开发生产的产品
- ❖ 在普通光线下显示为不可见; 只有在特定的紫外光环境 (3650A紫外光——此光源安全, 对人体无伤害, 如: 验钞机紫外线灯340波长) 下, 所打印的防伪内容才清晰可见
- ❖ 防伪墨水是接受紫光后迅速反射回来, 不需任何能量
- ❖ Same technics with normal ink, no clogging, environmental friendly, and preserve for a long time.
- ❖ Create a magical world, enjoy a mystery life.
- ❖ Suitable for piezoelectric printers
- ❖ Only put it under UV light (3650A ultraviolet —— the light is safe and harmless for human) and the picture will show up. Nothing will appear if you put it under normal light.
- ❖ Anti-counterfeiting ink receives ultraviolet and reflect it quickly, no energy required.



Proofs/样张

创造奇幻世界, 感受梦幻生活!

Create a magical world, enjoy a mystery life!

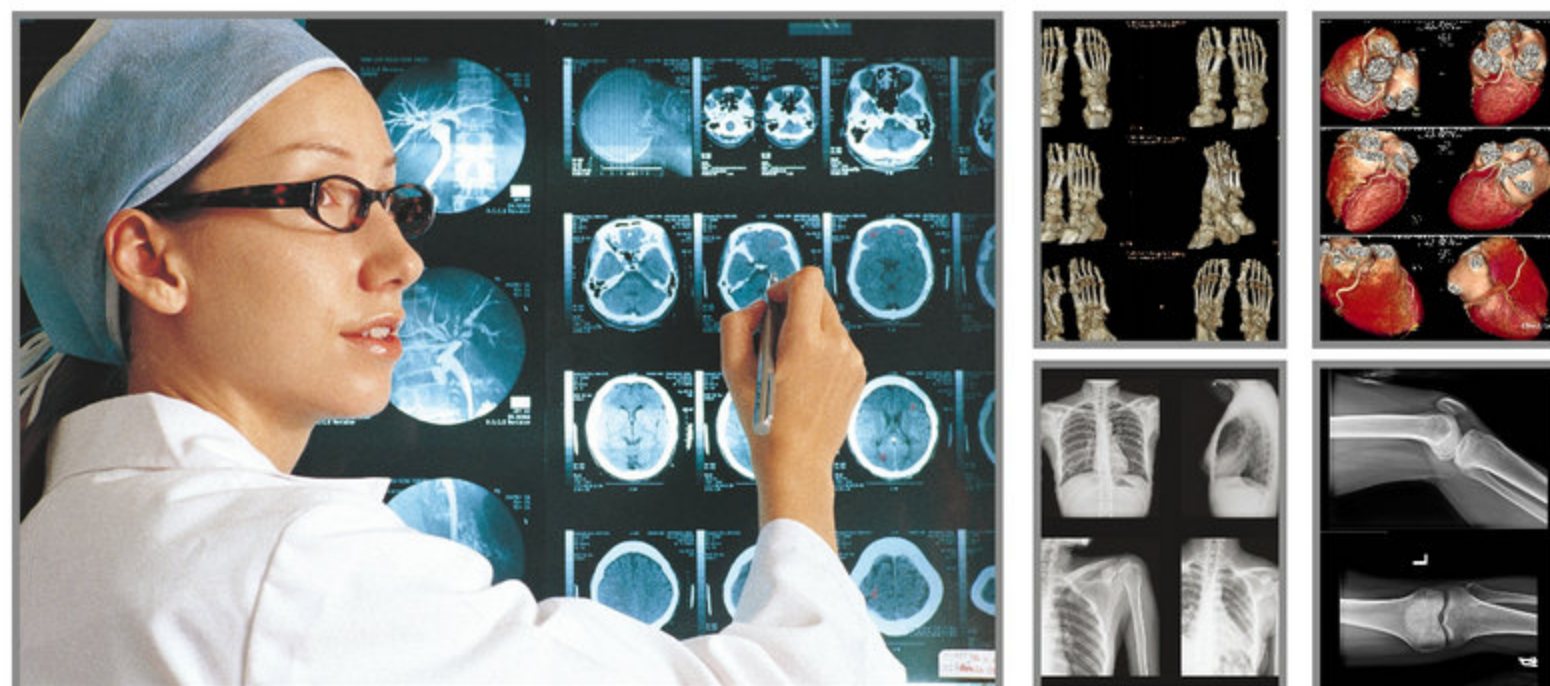
传美讯隐形防伪颜料墨水是针对爱普生系列压电式打印机所调整的产品。在紫外光的照射下, 该墨水制作的画面更会形成立体感强, 成像清晰的完美视图。防伪墨水是最先进的隐性技术生产的高新墨水, 有红, 黄, 蓝三种色彩。在普通光线下显示为不可见; 只有在特定的紫外光环境 (3650A紫外光——此光源安全, 对人体无伤害) 下, 所打印的防伪内容才清晰可见。

Trendvision invisible Security ink is made for EPSON piezoelectric printers. It is based on principle of metal reflecting, and contains the characteristics of metal lighting and reflecting. So the pictures that printed by Trendvision invisible Security ink will be more stereoscopic and clear under UV light. Trendvision Security ink was designed according to advanced leuco technique including magenta, yellow, and cyan total three colors.

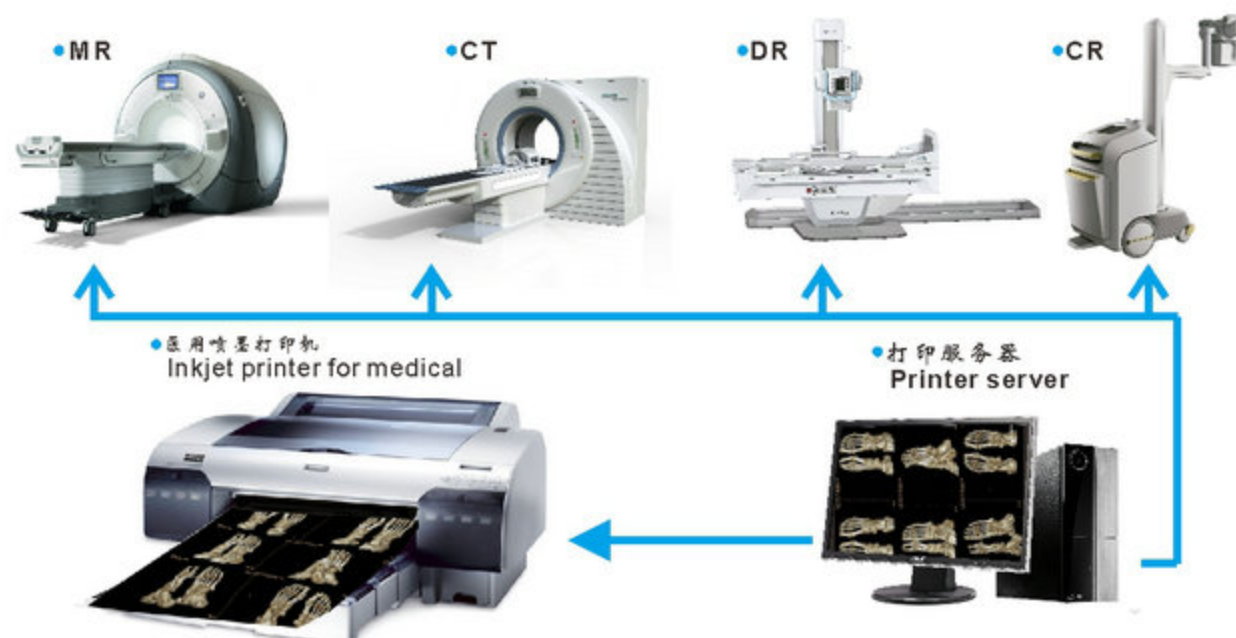
Nothing will appear if you put it under normal light, but under UV light (3650A ultraviolet —— the light is safe and harmless for human) the picture will show up.

HD Medical Film Special Ink/医疗胶片墨水 For Epson/Canon Desktop Printer

现代医疗胶片输出设备
The modern trend medical film image output
Inkjet Printing For HD Medical Film Special Ink
喷墨医疗胶片打印



●医疗胶片墨水
Medical Film Special Ink



| Ink Code | Colour | Cartridge No | HD Medical Film Special Ink For Epson/Canon Printer |
|------------|--------|-----------------------------|--|
| ELD-K0002 | ● | T6731-6736/T6741-6746/ | L800/L801/L1800/L810/L850/L201/L101/L-350/M101/L455/L-303 |
| ELD-LK0002 | ● | T0851-T0856/T1221-T1226/ | Stylus Photo R330/R230/R210/T50/R270/R280/R285/R290/R1390/ |
| ELD-C0002 | ● | T0491-T0496/T0821-T0826/ | R1400/T50/T60/RX610/R260/R380/RX580/R265/R360/ TX700W/ |
| ELD-M0002 | ● | T0821N-T0826N/T0851N-T0856N | TX800FW/Artisan 600/ 610/ 700/ 800/ 810/TX700W/TX800FW/ |
| ELD-Y0002 | ● | T0981-T0986/T0791-T0796/ | L100/L-110/L-111/L200/L210/L211/L303/L301/L-555/L-551/ |
| ELD-LC0002 | ● | T0811-T0816/T6641-6644/ | L-550/L-358/L-355/L-353/L-351/L-301/L-300/L558 /L1300 etc. |
| ELD-LM0002 | ● | T6721-6724 | |
| CLD-K0002 | ● | CLI-220/221/CLI-320/321 | CANON PIXMA IP3600/IP3680/IP4600/IP4680/IP4850/IP4980/MP540/ |
| CLD-LK0002 | ● | CLI-520/521/CLI-525/526 | MP545/MP638/MP620/MP630/MP980/MX868/MX885/IP4880/MG5180/ |
| CLD-C0002 | ● | CLI-725/726/CLI-820/821 | MG5250/MG5150/MG6150/MG5280/MG6180/MG8180/MG8150/IX6550 |
| CLD-M0002 | ● | CLI-825/826 | PIXMA MG8170/6170/IX6520/IX7000/IX6880/IX6870/IX6830/IX6820/ |
| CLD-Y0002 | ● | CLI-225/226/325/326 | IX6780/IX6770/IX6580/IX6560 |

特点和优点

按连续8小时工作, 120张A4不断线. 线条清晰, 不飞墨, 不扩散、不化墨. 最大墨量处打印5分钟后全干, 用纸巾擦拭不沾墨. 适应胶片涂层, 不滴墨, 无拉丝、无白点、干燥后不龟裂. 档案袋静置60天Δ值小于1. 1年以上无较大色差. UV光照2小时色差Δ值小于1

Features and benefits :

No printing cut problem for 8 hours consecutive of 120pcs, A4 size. lines is clear, no bleeding ,No diffusion,printing with maximun ink can reach to 5 minutes, ink non ,stick if use paper towel to wipe ,Adaptation film coating, no bleeding, no drawbench, no white spots, no cracks after drying,Portfolio standing 60 days Δ value less than 1, color not change after a year. UV shine for 2 hours aberrationΔvalue less than 1

Ultra Premium UV Dye Ink /超优抗UV染料墨水 For Epson/Canon/HP Desktop Printer



Can replace all ordinary dye ink printing 可取代所有普通染料墨水打印

| Ink Code | Colour | Cartridge No | Ultra Premium UV Dye Ink For Epson Printer |
|------------|--------|-----------------------------------|---|
| EUD-K0002 | ● | T1251-T1254/T1281-T1284 | ME320/ME330/ME office560W/620F/900W/960WME30/ME300/323/325/ |
| EUD-C0003 | ● | T1331-T1334/T1411-T1414 | 520/630/office70/80W/360/600F/700FW/Work force30/40/1100/310/500/ |
| EUD-M0003 | ● | T0981-T0986/T731-T734/73N | T11/T13/T20/T23/T24/T33/T40W/T1100/TX100/TX110/TX105/TX160/ |
| EUD-Y0003 | ● | T0821-T0826/82N/T0851-T0856/85N | SX310/SX410/SX510/SX600/R270/R280/R285/R290/R1390/R1400/T50/ |
| EUD-LC0003 | ● | T0691-T0694/T1171-T1174 | T60/TX700W/TX800FW/700/ 800/810/P50/T50/R290/R230/R270/R285/ |
| EUD-LM0003 | ● | T1031-T1034/T1091-T1094 | ME 10/ME 101/ME 301/ME 401/2520/2530WF/2540/2010W/2521/2531/ |
| | | T0811-T0816/T0791-T0796 etc. | 2541/303/XP-103/XP-203/XP-33/XP-306/XP-406/XP-407/PX-535Fetc. |
| | | Universal Epson Series | Universal Epson Series Printer |
| CUD-K002 | ● | PG-40/41/PG-830/831/PG-50/51/ | CANON PIXMA-IP1180/IP1200/IP1600/IP1880/IP2200/IP2580/IP6210D/ |
| CUD-C002 | ● | PG-210/211/PG-810/811/815/816/88/ | MP258/MP268/MP276/MP486/MP496/ PIXMA MX328/MX338E408/E510/ |
| CUD-M003 | ● | 98/740/741/840/841/PG-845/846/ | E600/E610/E618/MG4270/MG4220/MG4120/MG3580/MG3570/MG3530/ |
| CUD-Y002 | ● | PG-48/CL-58/PG-83/CL-93/PG-87/ | MG3120/MG2590/MG2570/MG2520/MG2490/MG2470/MG2400/MG2270/ |
| | | CL-97/311/CL-835/CL-836/PG-245/ | MG2220W/PP-201/P200/IP2700/IP1188/IP2880/IP2880/IP2820/IP2788/ |
| | | PG-945/CL-946/CL-241/BC-340etc. | IP2780/IP2772/IP2770/IP270 etc Universal Canon Series Printer |
| | | Universal Canon Series | |
| HUD-K003 | ● | HP21/22/56/57/ | Desk jet 450/3320/3322/3323/3325/3420/3425/3450/3520/3535/3550/ |
| HUD-C003 | ● | 27/28/816/817/ | 3620/3650/3653/3740/3745/3843/3845/3847/450/5150/5151/5160/5550/ |
| HUD-M003 | ● | 93/94/95 | 5551/5562/5650/5652/5655/5850/9650/9670/9680 |
| HUD-Y003 | ● | | |

特点和优点

防水, 耐光, 不褪色, 环保,水溶性好, 着色力强, 色泽鲜明纯净, 水溶液稳定不变质, 色泽坚牢耐候, 采用优质进口原料, 精细颗粒, 不堵塞打印头, 打印流畅, 色彩还原能力强, 打印出来的图像色彩艳丽, PH值与原装相近, 不伤害打印头, 打印图像可以保存更长时间, 兼容性好, 100%兼容原装墨盒。

Features and benefits :

Lightfastness,non-fading,environment Friendly,great Water-solubility,powerful Tinting Ability, Vibrant And Clear Coloring,stable Aqueous Solution But Never Degenerating,great Fixing And Weather Resistance Ability: Premium Imported Raw Material, Super Fine Partical To Make Sure Printing Smoothly And No Clogging To The Printhead; Strong Color Reduction To Make Sure Intence And Vibrant Color Image: Ph Value Close To The Original, No Harm To The Printhead; Great Lightfastness Ability, Keep Photo Reserving Time Much Longer; Great Compatibility , 100% Compatible To The Original Cartridge.

LED UV Ink /LED UV墨水 For Flat Printer



| Ink Code | Colour | UV Ink For Flat Printer |
|-------------|---------------------|-------------------------|
| UV-K002WF | ● K | 适用于平板打印机 |
| UV-LK002WF | ● LK | UV Ink For Flat Printer |
| UV-LLK002WF | ● LLK | |
| UV-C002WF | ● C | |
| UV-M002WF | ● M | |
| UV-Y002WF | ● Y | |
| UV-LC002WF | ● LC | |
| UV-LM002WF | ● LM | |
| UV-W002WF | ○ White | |
| UV-CS002WF | ○ Cleaning Solution | |
| UV-GO002WF | ○ Gloss Optimizer | |
| UV-UN002WF | ○ Universal Coating | |

产品特点:

采用进口环保原料, 不含汞, 无挥发, 低气味。具有出色的强度耐腐蚀和耐擦性, 全面兼容汞灯、卤素灯、LED-UV灯, 墨水输出精度高、色域宽广, 色密度高覆盖力强, 干燥速度快, 经UV固化后即打即干, 满足客户快速生产需要。待机性能优秀, 不易出现干头, 适合户内户外使用, 耐水煮, 耐酒精, 墨水稳定性性能好, 彩色是10个月保质期, 白色6个月保质期承印材料: 亚克力、金属、玻璃、陶瓷、木材、铜版纸、PC、PVC、ABS、PS等材料

Product features:

Use imported environment and friendly materials, without mercury, volatile and low odor. Excellent corrosive and scratch resistant, It is compatible with mercury lamp, halogen lamp and LED UV lamp. High precision printout and wide color gamut, excellent color density. Fast drying, it fully dry after UV curing to meet the customer needs fast printing demand. Good standby performance and no clogging problem. It suitable use for indoor and outdoor with water resistant and alcohol resistant. Good ink stability, the colors shelf life is 10 month and the white color is 6 month. Scope of application: acrylic, metal, glass, ceramic, wood, art paper, PC, PVC, ABS, PS etc

Sublimation Ink/热转印墨水 For Epson /Brother Desktop Printer



| Ink Code | Colour | Cartridge No | Sublimation Ink For Epson/Brother Printer |
|------------|--------|---|---|
| SD-K023 | ● K | T1251-T1254/T1281-T1284 | ME320/ME330/560W/620F/900W/960W/ME300/323/325/T11/T13/T20/T23/T24/T33/T40W/T1100/TX100/TX110/TX105/TX160/TX200/TX210/TX300F/TX410/TX510/TX515/TX550/TX600/TX700/B300/B310N/510N/B518DN/SX20/SX100/SX110/SX105/SX115/SX310/SX410/SX510/SX600/R270/R280/R285/R290/R1390/R1400/T50/T60/TX700W/TX800FW/700/800/810/P50/T50/R290/R230/R270/R285/ME 10/ME 101/ME 301/ME 401/2520/2530WF/2540/2010W/2521/2531/2541/303/XP-103/XP-203/XP-33/XP-306/XP-406/XP-407/L810/L801/L101/R330/R3000/R2000/R1900/R1800/R800/ etc. |
| SD-C023 | ● C | T1331-T1334/T1411-T1414 | Universal Epson Series Printer |
| SD-M023 | ● M | T0981-T0986/T731-T734/T3N | |
| SD-Y023 | ● Y | T0821-T0826/82N/T0851-T0856/85N | |
| SD-LC023 | ● LC | T091N-T094N/T0681-T0684/T0691-T0694/T1171-T1174 | |
| SD-LM023 | ● LM | T1091-T1094/T0811-T0816/T0791-T0796/T0870-874/877-879 | |
| SD-R023 | ● R | T1591-1599/T1571-T1579/IC66 etc. | |
| SD-G023 | ● G | Universal Epson Series | |
| SD-MK023 | ● MK | | |
| SD-BL023 | ● BL | | |
| BRSD-K0001 | ● K | LC 40/41/47/900/950/ | BROTHER FAX-1840C/2440C/DCP-110C/310CN /1940C/2440C/210C/410CN/420 CN/620 CN/MFC-J6710DW/MFC-J6510DW/MFC-J6910DW/MFC-J2510/MFC-J5910DW/MFC-J430W/MFC-J825DW/MFC-J625DW/MFC-J6910DW/MFC-J6710DW/MFC-J220 |
| BRSD-C0001 | ● C | LC 12/17/73/75/79/400/450/ | |
| BRSD-M0001 | ● M | 1240/1280/LC597/LC595 | |
| BRSD-Y0001 | ● Y | LC400/LC450 | |

热转印墨水也叫热升华墨, 主要用于加热转移印制产品, 热转印墨可以通过热转印机加热后, 将图案和文字清晰的印制在其它产品上, 所以是热转印行业里必不可少的材料之一, 通过热转印机加热转印后, 图像清晰, 色彩还原度高, 打印在纸上着色度高, 转移印制后, 色彩还原好。

Sublimation ink can be printed and transferred onto various coated media using heat transfer machines. Trendvision China provides 4 color, 6 color and 8 color sublimation ink for piezo-electric printers. Trendvision sublimation ink can be transferred to bags, coated mugs, tiles, caps, tents, banners, T-shirts, stamps, art and gifts. Trendvision heat transfer paper works well with our ink, save your time and labor for searching. Trendvision, We provide you one stop solution for digital transfer.

Features and benefits | 特点和优点:

- ↓ Intense and vibrant color ,Long lasting head performance |明亮而鲜艳的色彩, 长期保护喷嘴
- ↓ Good scratch resistance and washing resistance |稳定而持久的打印连续性
- ↓ Stable and long lasting printing, Suitable for piezo-electronic printers |普通纸和转印纸均可使用, 适用压电式喷头打印机